

**QK-A036 Manual****NMEA 2000<--> WiFi /USB Bi-directional Converter  
With Integrated Voyage Data Logger**

Designed in UK

**Features**

- NMEA 2000 to WiFi and USB gateway
- Integrated SD card(32GB) for voyage data logging
- Converts the most common NMEA 2000 PGNs to / from NMEA 0183 sentences over WiFi and USB
- Records all NMEA 2000 network activity for system diagnosis and performance analysis
- Circular buffer preserves latest recorded data while oldest data overwritten when SD card is full
- Galvanic opto-isolation on NMEA 2000 CAN bus connection
- Free Firmware updates provided when new features and conversions are added. (Update via USB from Windows PC)
- Pre-fitted cables for ease of installation
- Recorded data in selectable format: NMEA 0183 or PCDIN(NMEA 2000 raw data)
- Read to access 'Quark-cloud'
- WiFi supports Ad-hoc, station and standby mode

**• Contents**

1.	Setup Overview .....	3
1.1.	Before leaving home .....	3
1.2.	Installation and Setup .....	3
2.	Introduction .....	4
3.	Mounting .....	5
4.	Connections .....	6
4.1.	Connecting to the NMEA 2000 network .....	6
4.2.	Micro SD card slot .....	6
4.3.	Wireless Connections .....	7
4.3.1.	WiFi Ad-hoc mode .....	7
4.3.2.	WiFi Station mode .....	8
4.3.3.	WiFi Standby .....	9
4.4.	Connecting Via USB Port .....	9
4.4.1.	Windows: .....	9
4.4.2.	Mac: .....	10
4.4.3.	Linux: .....	10
5.	Status LED'S .....	10
6.	Configuration (via USB) .....	11
7.	Upgrading Firmware .....	12
8.	Cloud Service .....	12
9.	Conversion Lists .....	13
9.1.	Conversion Lists .....	13
9.1.1.	NMEA 0183 to NMEA 2000 conversions .....	13
9.1.2.	NMEA 2000 to NMEA 0183 conversions .....	14
10.	Specification .....	15
11.	Limited Warranty and Notices .....	16
12.	Glossary .....	16

## 1. Setup Overview

### 1.1. Before leaving home

**1. Drivers and Configuration software are optional and only needed for specific features.** The Configuration Software and specific instructions are included on the FREE CD and as a download from <https://www.quark-elec.com/downloads/>.

**Consider if there is a CD reader/internet access on site, if you will use the features below.**

#### **Accessing data on a Mac/Linux/Windows PC**

- Driver required if using Windows and should install automatically, if not, it is included on the free CD and at Quark-elec.com. Drivers not required for Mac or Linux.
- 12.0V power from N2K bus

**Connecting wirelessly to the A036 through Station mode WiFi** (through a router, not just peer-to-peer directly from the device)

- Configuration software (Windows PC Required). Driver may be required as above
- 12.0V power from N2K bus

**Access Quark-cloud.** Operator can control the settings of communication with the Quark-cloud.

- Configuration software (Windows PC Required). Driver may be required as above
- 12.0V power from N2K bus

### 1.2. Installation and Setup

#### **1. Mounting: Consider the location...**

- Dry, sturdy location 0.5m from other WiFi equipment.
- Ensure there is the correct length of wires needed. If drilling holes for cabling, seal around any holes to prevent damage to the vessel or equipment. Keep USB and SD card dust cover on if USB is not used.

#### **2. Connect to the NMEA 2000 backbone (12.0V power)**

The A036 draws 12.0V power from the NMEA 2000 backbone. Users will need an N2K backbone and 2 termination resistors (1 on each end).

#### **3. Check LED lights are working on the A036**

- Power: Top LED (red) flashes at 3 second intervals.
- NMEA 2000: Middle LED flashes for each valid NMEA 2000 PGNs sent out on NMEA 2000 port.
- WiFi: Bottom LED flashes for each valid message activated on WiFi and USB port.

#### **4. Need to connect wirelessly without a router?**

- **On personal device (phone, laptop etc.):** 15 seconds after the A036 has powered up, users can scan for a WiFi network with an SSID similar to 'QK-A036xxxx'. Connect the device to '**QK-A036xxxx**' with the default password: '**88888888**'.
- **In Chart software:** set the protocol as '**TCP**', IP address as '**192.168.1.100**' and the port number as '**2000**' in the chart software.

**5. To connect wirelessly through a router (Station mode).** A036 is set to connect wirelessly in Ad-hoc mode by default ('peer-to-peer' without a router or access point). You can change to Station mode (connecting through a router) using the Configuration software.

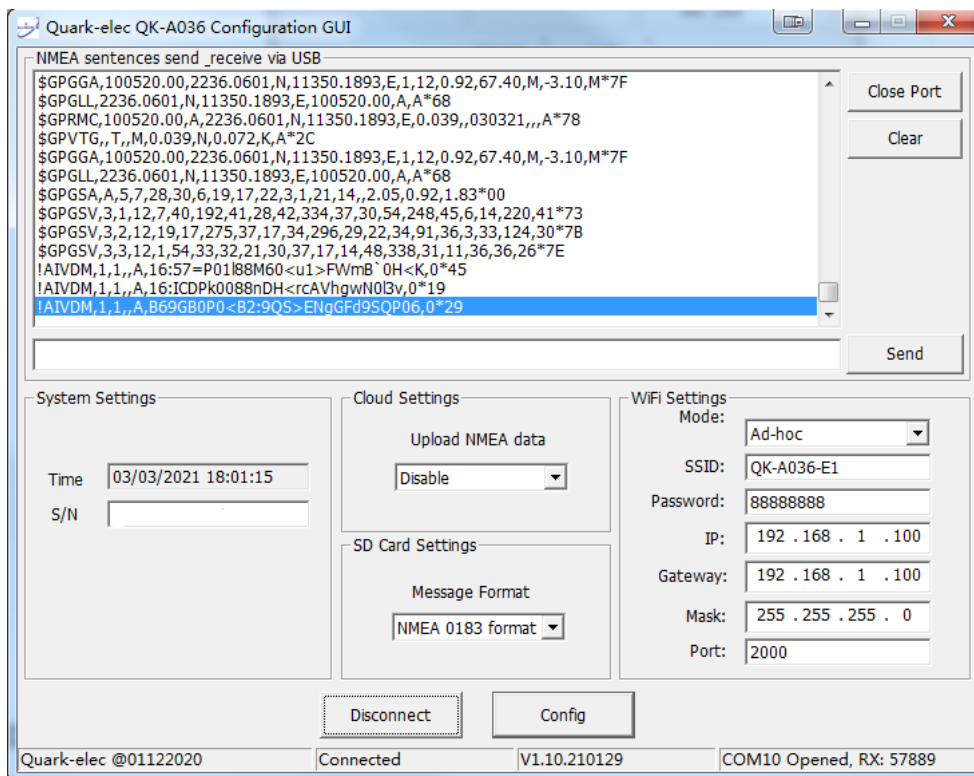


Figure 1: Example setup

## 2. Introduction

The A036 is a sophisticated NMEA 2000 to/from WiFi and USB multiplexer and an integrated vessel data recorder (VDR).

A036 transfers data from an NMEA 2000 backbone to any compatible device (e.g. laptop, tablet or smart phone) connected to it via WiFi or USB port. With it, the N2K network data includes vessel course, speed, position, wind speed/direction, and water depth. AIS messages can be viewed in the chart plotter software. The WiFi and USB connections are bi-directional so the chart plotter software can also send cross track and waypoint information to an NMEA 2000 autopilot to steer a programmed course.

In addition to bi-directional NMEA 2000 to WiFi and USB, the A036 records the messages transmitted from every device interconnected on the NMEA 2000 network. All messages are stored with an integrated SD card. The stored data can be uploaded to Quark-cloud or accessed over an SD card reader (not provided). With an up to 32GB space SD card, 7 weeks or even more of vessel data can be stored. User won't have to worry about losing the most recent data since A036 uses a circular buffer where the oldest data is overwritten only when memory is full.

The A036 can be used out of the box for standard functionality or configured for additional sophistication.

**Default Standard Functionality:** The multiplexer converts all messages on the N2K backbone and sends this data to the USB output and WiFi interface.

- **Bi-directional WiFi:** With 2-way WiFi connectivity, the A036 allows for wireless connection to autopilots and other NMEA devices if desired. Data from instruments is available wirelessly through WiFi connections, giving complete freedom to navigate, monitor and control from anywhere on board. Up to 4 connections from iPads, iPhones, Android phones and tablets or other WiFi-enabled devices can connect directly to the A036 with no need for a WiFi access point. (Though it can also be connected to an access point/router if desired (see WiFi section))

- **Bi-directional USB:** The USB port also supports bi-directional communications. It allows computer-based, navigation applications to send sentences through the multiplexer to control an autopilot and other devices. The USB port is also used for configuration of specific WiFi and NMEA ports settings.
- **Records all NMEA 2000 Network activity** for Vessel tracking and performance analysis (SD card need to be fitted).

**Additional Configurable Functionality (through Windows software via USB):**

- **Additional WiFi options** including connection to an access point to share marine data across your entire WiFi network or connect A036 to the Internet. WiFi can be disabled if desired.
- **Upload the vessel data to Quark-cloud options:** the recorded NMEA data (in .txt format) will be automatically uploaded to the cloud once the device has been registered and connected to the Internet. The Upload function can be disabled if desired. One device can have up to 8GB cloud space and the server will overwrite the oldest files once the space is full.

### 3. Mounting

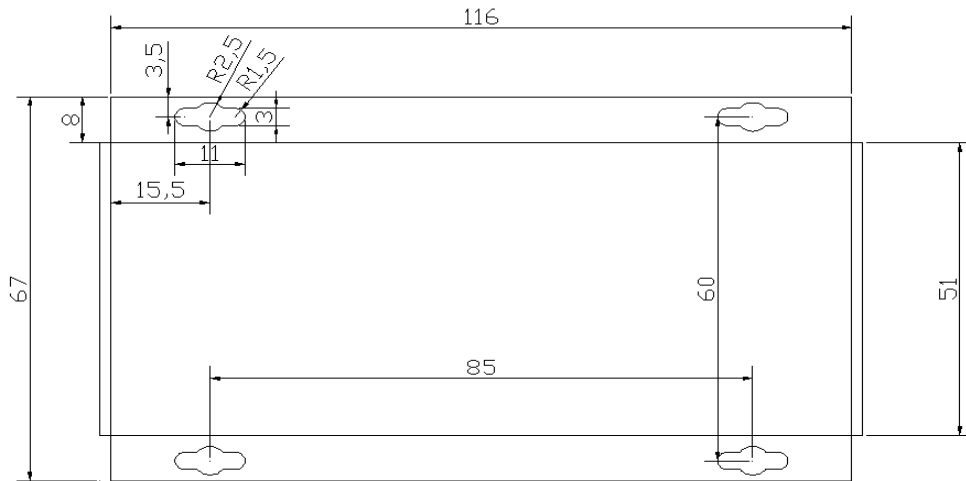
The A036 is aimed at the commercial, leisure, fishing boat and vessel monitoring markets.

It is not waterproof so need to be mounted in a dry place such as behind the instrument panel on a flat surface. **Please allow 0.5m between the A036 and other WiFi devices.** This will help avoid interference problems.

If USB is not being used then please use the USB dust cover provided. This will help maintain the port and keep dust out of A036.

SD card dust cover should be applied all times even no SD card used.





Tolerance:  $\pm 0.25$

Figure 2: A036 Dimension in mm

## 4. Connections



**Disconnect all power sources before connecting your equipment!**

### 4.1. Connecting to the NMEA 2000 network

A036 is pre-fitted with a five-core screened cable for the NMEA 2000 connection, fitted with a male micro-fit connector. Simply connect the cable to the network backbone using a T-piece connector.



Figure 3: Pin NMEA 2000 male micro-fit connection

The main communication channel of a NMEA 2000 network is a NMEA 2000 backbone to which NMEA 2000 devices connect. Each NMEA 2000 device connects to the backbone with a T-piece connector. **A NMEA 2000 backbone must be connected to power the A036. An NMEA backbone always required two termination resistors, one at each end.**

**Please note 12.0V power for the A036 unit comes from the NMEA 2000 backbone.**

### 4.2. Micro SD card slot

A standard Micro SD card is pre-fitted in A036 and ready to use.

If the operator has their own SD card they wish to use with A036, please turn off the power before inserting it in the slot. A036 will automatically format the card after the first time of powering up. A036 will restart itself after the formatting process has completed and then the card can be used to save log files. The formatting process could take up to 3 minutes depending on the card space and speed.

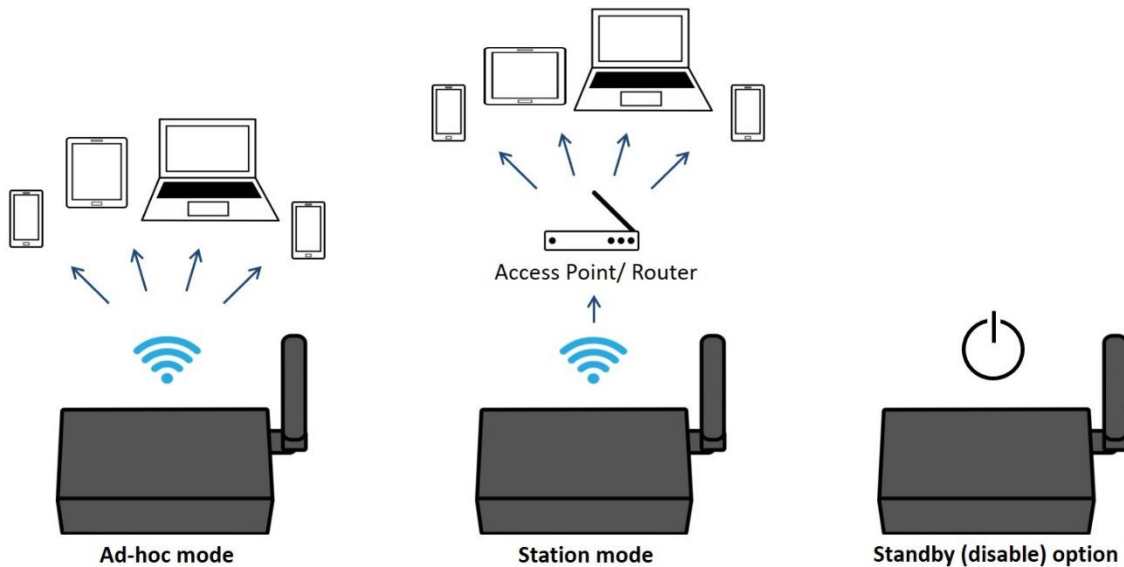


If the operators want to delete all the recorded data, or for any other reason they want to format the card, simply run the configuration tool. Ensure the configuration tool is connected to A036 and then press CTRL+SHIFT+F9, a new window will pop up to allow formatting.

### 4.3. Wireless Connections

The A036 allows users to view the output data through WiFi on a PC, tablet, smartphone or other WiFi enabled device. Users can access marine network data including vessel course, speed, position, wind speed, direction, water depth etc. These can be viewed in the chart software.

The IEEE 802.11b/g wireless standard has three basic modes of operation; Ad-hoc mode (peer to peer) ,station mode (also called infrastructure mode) and standby(WiFi disabled).



The A036 supports both:

- In **Ad-hoc mode WiFi:** mobile devices connect directly (peer to peer) to another device, without a router or access point. For example; PC, tablet or smartphone can connect directly to the A036 to receiver marine data.
- In **Station mode WiFi:** wireless devices communicate through an access point (AP) such as a router that serves as a bridge to other networks (such as the Internet or LAN). This allows the router to handle the data and traffic from the device. This data can then be picked up through the router anywhere on the local area network. This is similar to plugging the device directly into the router by wire, but instead using wireless technology. In this way, the mobile devices receive both the marine data and other AP connections for example Internet. A036 need to be setup with sation mode if Quark-cloud service required.
- WiFi can also be disabled in **Standby mode**. This reduces power consumption and may be required when connecting 2 WiFi transmitting devices.

**The A036 is set to Ad-hoc mode as a default setting, but can be easily setup to station mode through the configuration tool software.**

#### 4.3.1. WiFi Ad-hoc mode

From a phone, tablet or PC: Once the A036 has powered up, scan for a WiFi network with an SSID of 'QK-A036' or similar.

<b>A036 SSID</b>	Similar to 'QK-A036xxxx'
------------------	--------------------------

## QK-A036 Manual

Connect the device to 'QK-A036xxxx' with the default password: '88888888'.

<b>WiFi password</b>	88888888
----------------------	----------

In the chart software (or chart plotter), Set the protocol as 'TCP', IP address as '192.168.1.100' and the port number as '2000' in the chart software.

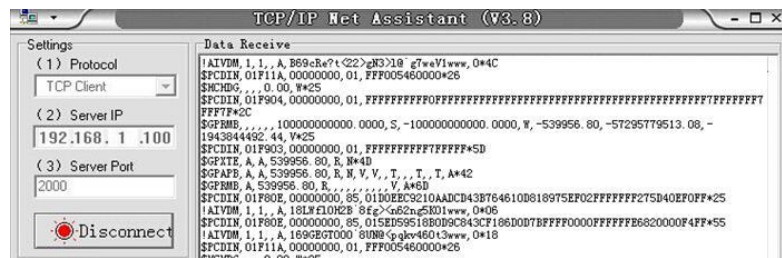
<b>Protocol</b>	TCP
<b>IP address</b>	192.168.1.100
<b>Data Port</b>	2000

With the above settings, a wireless connection should be established and the user will be able to receive the data through the chart software.

**Note: In Ad-hoc mode, the IP address should not be changed.**

**SSID and password can be changed using the configuration software; the password should be between 8 to 12 characters.**

The wireless connection and data flow can be checked with TCP/IP port monitoring software as shown. (Image: TCP/IP Net Assistant shown as example)



### 4.3.2. WiFi Station mode

Station mode WiFi allows the router to handle the data and traffic from the device. This data can then be picked up through the router anywhere on the local area network. Similar to plugging the device directly into the router by wire, but instead using wireless technology.

This allows the main mobile device to still receive Internet and for users to be able to view the data.

Users who use Quark-cloud service must setup their A036 in station mode and get an Internet access.

To begin using station mode the A036 should be attached to a computer running windows (for Mac user's windows boot camp) via USB.

1. Connect A036 to computer via Micro USB connection.
2. Run the Configuration tool and check connection to A036 at the bottom of configuration tool.
3. Change working mode to 'Station mode'
4. Enter the router's **SSID**.
5. Enter the **password** for the network (A036 allows the password should be 8 to 12 characters length).
6. Enter the **IP address** to assign to the A036. Start with 192.168. The third group of digits depends on the router's configuration (Commonly 1 or 0). The fourth group must be a unique number between 0 and 255. This number must not be used by any other equipment connected to the router.
7. Enter the **router's IP address** in the **Gateway** section. This can usually be found under the router. Leave the other settings as they are.
8. Click '**Config**' in the bottom right and wait about 60 seconds. After around 60 seconds Click '**Disconnect**'.
9. Repower the A036. The A036 will now attempt to connect to the router.

10. In the chart software set the protocol as 'TCP'

<b>Protocol</b>	TCP
<b>IP address</b>	(check the router)
<b>Data Port</b>	2000



Insert the **IP address** that was assigned the A036 by the router. Enter the Port number as '2000' in the chart software.

Users should now be connected and see marine data on chart software.

If not, check the router's **IP address list** and check the **IP address** that the router has given the A036. Occasionally, a router assigns a different **IP address** to a device than the one chosen. If this is the case, copy the **IP address** from the router into the chart software. If the **IP address** in the router's **IP address list** is the same as the one input into the chart software then everything will work in station mode. If users are unable to see any data repeat the steps, and check all the data has been input correctly.

If users are not able to view the data in station mode, the likely cause is either the data has been input incorrectly, or the IP address is different in the chart software to that of the router.

### 4.3.3. WiFi Standby

By setting up the WiFi as standby, the WiFi module will be disabled. This helps to reduce the power consumption or may be used when connecting two WiFi enabled devices.

## 4.4. Connecting Via USB Port

A036 is supplied with a USB connector. This connector provides data input and output as standard. The USB port is also used to configure A036 and to update the firmware.

This USB connector can be linked directly to a USB port on the PC. It can also be connected to other mobile devices via an USB OTG (On the Go) connection using the supplied cable.

### 4.4.1. Windows:

To enable the USB data connection of A036 to other devices, related hardware drivers may be needed, dependent on the system requirements. The driver can be found on the CD in the packing box or be downloaded from <https://www.quark-elec.com>

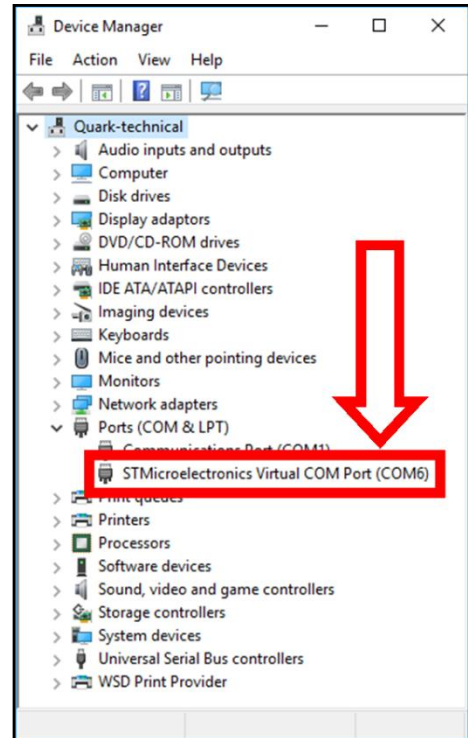
The drivers usually install automatically to the device if it is running Windows 10 (non-upgraded version). The A036 registers itself to the computer as a virtual serial com port. A new COM port will automatically show up in the device manager after plug in.

## QK-A036 Manual

After the driver is installed, run the Device Manager and check the **COM number** (this is the number associated with the USB port being used. The port number is the number that Windows assigns as an input device. These can be generated randomly by the computer). The chart software may require the COM number in order to access the data.

The port number for the A036 can be found in Windows 'Control Panel->System->Device Manager' under 'Ports (COM & LPT)'. Find the A036 in the list for the USB variant. To change this number, double click the A036 and select the 'Port Settings' tab. Click the 'Advanced' button and change the port number to the one required.

**Checking the USB data flow:** If desired, the USB data can always be checked with a terminal monitor application, like Putty or HyperTerminal. To do this, enter the following into the COM port settings: **Bits per second: 38400bps**, **Data bits: 8**, **Parity: None**, and **Stop bits: 1** as shown below using HyperTerminal on Windows as an example



### 4.4.2. Mac:

For Mac OS X, the A036 will be recognized and shown as a USB modem. The ID can be checked with the following steps:

1. Plug the A036 into a USB port and launch Terminal.app.
2. Type: `less /dev/*sub*`
3. The Mac system will return a list of USB devices. A036 will display as - `"/dev/tty.usbmodemXYZ"` where XYZ is a number. Nothing further needs to be done if it is listed.

### 4.4.3. Linux:

No driver is required for Linux. When plugged into the computer, A036 will show up as a USB CDC device on `/dev/ttyACM0` or similar.

## 5. Status LED'S

A036 features three LEDs which indicate power, NMEA 2000 and WiFi status respectively. Three LEDs turn on and then off after initialization. When operating, these LEDs flash as below:

- **Power:** Top LED (red) flashes at 3 second intervals.
- **NMEA 2000:** Middle LED (green) flashes for each valid NMEA 2000 PGN sent out on NMEA 2000 port.
- **WiFi:** Bottom LED (green) flashes for each valid message activated on USB and WiFi port.



Figure 4: LED functions

## 6. Configuration (via USB)

The Windows configuration tool can be used to setup the connection with the cloud, NMEA 0183 data format, and WiFi settings.

The **Configuration tool** can be found on the free CD and as a download from our website below.  
<https://www.quark-elec.com/downloads/configuration-tools/>

When the A036 is connected to a Windows PC and powered up, 'A036 connected' will be shown at the bottom of the Configuration software window. The software version will be shown in bottom right-hand corner.

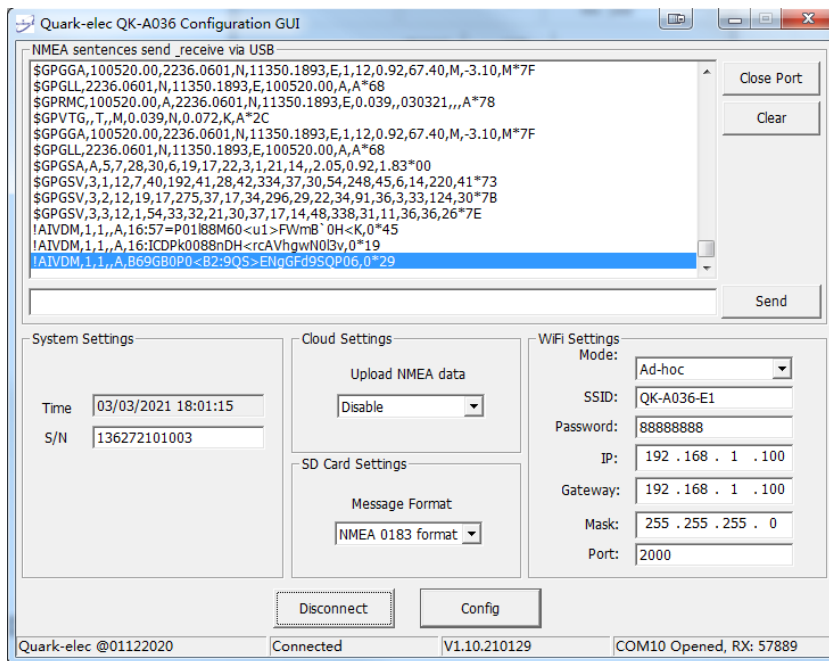


Figure 5 Configuration tool

## Cloud Settings

Operators can turn the communication with Quark-cloud on or off. The saved NMEA data (in .txt file) will be automatically uploaded to the cloud once the device has been registered and connected to the Internet. This upload function can be disabled if desired.

## WiFi

The A036 can be set up in either Ad-hoc (p2p), Station mode (Access Point), or standby(disabled). See [wireless connections](#) chapter for information.

## SD card settings

NMEA 2000 bus data can be saved as NMEA 0183 or PCDIN(raw NMEA 2000 messages) format on SD card.

## USB - Monitoring NMEA Messages

Connect A036 and then click 'Open port', all the sentences will be displayed in the application.

**Once settings are complete the user must click 'Config' and then click 'Disconnect'. Please restart A036 by un-plugging the NMEA 2000 connector. The unit is now ready for use.**

## 7. Upgrading Firmware

The current firmware version can be verified through the configuration tool (When connected, the firmware version will show in the bottom of the Configuration software window).

To upgrade the firmware,

1. Power up A036 and then connect it to Windows computer via USB.
2. Run the Configuration software.
3. Ensure the configuration tool is connected to the A036, and then click Ctrl+F7. Some laptop maybe need click Ctrl+F7+Fn.
4. A new Window will pop up with a drive named 'STM32' or similar. Copy the firmware into this drive and wait around 10 seconds to make sure the full file has been copied.
5. Close the window and the Configuration software.
6. Re-power the A036, and then the new firmware will be active.

The upgrading process is complete.

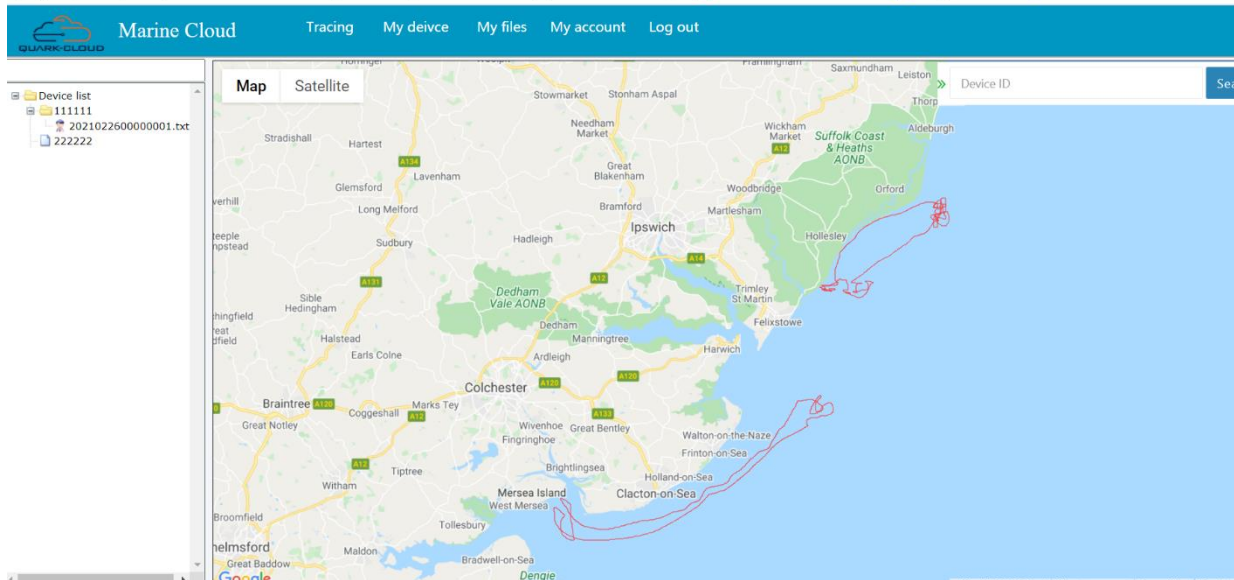
## 8. Cloud Service

Quark-cloud ([www.quark-cloud.com](http://www.quark-cloud.com)) allows people to back up the voyage data online. The sailing data can be uploaded to the cloud if an Internet connection is accessible.

Any NMEA data active on the NMEA 2000 backbone will be saved on the SD card and then uploaded to the cloud when the boat's network is connected to the Internet. The data includes position, vessel course, wind speed/angle, depth, heading, AIS messages, atmospheric pressure, state of digital switching equipment, tanks, battery status, voltage, current, and engine information.

Cloud service allows boat owners to download the tracks and data from home, share the position with friends and family or monitor environmental conditions remotely. Cloud also allows the technician to be able to directly access the boat's NMEA 2000 network and perform any diagnostic or analytical work accordingly. All these can be performed from a safe and remote place.

Accessing the cloud server is a new service that Quark-elec began providing in 2021. We are keen to keep developing it to provide more features. Please check out our website to get the latest news. One QK-A036 can have up to 8GB cloud memory for free in the first 24 months.



## 9. Conversion Lists

### 9.1. Conversion Lists

The conversion tables on the following pages list the supported NMEA 2000 PGN's (parameter group numbers) and NMEA 0183 sentences. It is important to check the tables to confirm that the A036 will convert the sentences/PGNs required.

Through USB and WiFi the A036 will output in NMEA 0183 format, including all NMEA 0183 messages received and NMEA 0183 messages converted from the NMEA 2000 network.

WiFi/USB inputs are NMEA 0183 messages and are converted to NMEA 2000 for the NMEA 2000 bus.

The following is a typical PCDIN message format outputted through WiFi and USB. The chart software will convert this into more meaningful information.

---Received message: \$PCDIN, 01F119, 00000000, 16,0064050800FFFF0C\*5B---

Header	PGN	Time Stamp	Source ID	Data	Termination	Check Sum
\$PCDIN	01F119	00000000	16	0064050800FFFF0C	*	5B

#### 9.1.1. NMEA 0183 to NMEA 2000 conversions

The following NMEA 0183 to NMEA 2000 conversions are currently supported.

NMEA 0183 sentence	Function	Converted to NMEA 2000 PGN/s
DBT	Depth Below Transducer	128267
DPT	Depth	128267
GGA	Global Positioning System Fix Data	126992, 129025, 129029
GLL	Geographic Position Latitude/Longitude	126992, 129025
GSA	GNSS DOP and Active Satellites	129539

GSV	GNSS Satellites in View	129540
HDG	Heading, Deviation & Variation	127250
HDM	Heading, Magnetic	127250
HDT	Heading, True	127250
MTW	Water Temperature	130311
MWD	Wind Direction & Speed	130306
MWV	Wind Speed and Angle (True or relative)	130306
RMB	Recommended Minimum Navigation Information	129283,129284
RMC*	Recommended Minimum Specific GNSS Data	126992, 127258, 129025, 12902
ROT	Rate Of Turn	127251
RPM	Revolutions	127488
RSA	Rudder Sensor Angle	127245
VHW	Water Speed and Heading	127250, 128259
VLW	Dual Ground/Water Distance	128275
VTG*	Course Over Ground and Ground Speed	129026
VWR	Relative (Apparent) Wind Speed and Angle	130306
XTE	Cross Track Error, Measured	129283
ZDA	Time & Date	126992
VDM	AIS Message 1,2,3	129038
VDM	AIS Message 4	129793
VDM	AIS Message 5	129794
VDM	AIS Message 9	129798
VDM	AIS Message 14	129802
VDM	AIS Message 18	129039
VDM	AIS Message 19	129040
VDM	AIS Message 21	129041
VDM	AIS Message 24	129809. 129810

Please note: some PGN sentences that are received require additional data before being sent.

### 9.1.2. NMEA 2000 to NMEA 0183 conversions

The following NMEA 2000 to NMEA 0183 conversions are currently supported.

NMEA 2000 PGN	HEX code	Function	Converted to NMEA 0183 Sentences
126992	1F010	System Time	ZDA
127245	1F10D	Rudder	RSA
127250	1F112	Vessel Heading	HDG, VHW
127251	1F113	Rate of Turn	ROT
127258	1F11A	Magnetic Variation	HDG
128259	1F503	Speed, Water referenced	VHW
128267	1F50B	Water Depth	DBT, DPT
128275	1F513	Distance Log	VLW
129025	1F801	Position, Rapid Update	GLL
129026	1F802	COG & SOG, Rapid Update	VTG
129029	1F805	GNSS Position Data	GGA, GLL, GSA, RMC, ZDA
129033	1F809	Time & Date	ZDA

129044	1F814	Datum	DTM
129283	1F903	Cross Track Error	APB, RMB, XTE
129284	1F904	Navigation Data	RMB
129291	1F90B	Set & Drift, Rapid Update	VDR
129539	1FA03	GNSS DOPs	GSA
129540	1FA04	GNSS Sats in View	GSV
130306	1FD02	Wind Data	MWV
130310	1FD06	Environmental Parameters	MDA, MTW
130311	1FD07	Environmental Parameters	MDA
130312	1FD08	Temperature	MDA, MTW
129038	1F80E	AIS Message 1,2,3	VDM
129793	1FB01	AIS Message 4	VDM
129794	1FB02	AIS Message 5	VDM
129798	1FB06	AIS Message 9	VDM
129039	1F80F	AIS Message 18	VDM
129040	1F810	AIS Message 19	VDM
129809	1FB11	AIS Message 24 (Part A)	VDM
129810	1FB12	AIS Message 24 (Part B)	VDM

Please note: some PGN sentences that are received require additional data before being sent.

## 10. Specification

Item	Specification
DC supply	12.0V (+/-10%)
Average supply current	45mA
Maximum supply current	95mA
NMEA data format	ITU/ NMEA 2000 and 0183 format
NMEA 2000 port baud rate	250kbps
NMEA 2000 Compatibility	Fully NMEA 2000 certified
LEN	2
WiFi mode	Ad-hoc, Station modes on 802.11 b/g
Security	WPA/WPA2
Network Protocols	TCP
Cable Length NMEA 2000	1.0m
Operating Temperature	-20°C to +55°C
Storage Temperature	-30°C to +70°C
Recommended Humidity	0 - 93% RH

## 11. Limited Warranty and Notices

Quark-elec warrants this product to be free from defects in materials and manufacture for one year from the date of purchase. Quark-elec will, at its sole option, repair or replace any components that fail in normal use. Such repairs or replacement will be made at no charge to the customer for parts and labour. The customer is, however, responsible for any transportation costs incurred in returning the unit to Quark-elec. This warranty does not cover failures due to abuse, misuse, accident or unauthorized alteration or repairs. A returns number must be given before any unit is sent back for repair. The above does not affect the statutory rights of the consumer.

### Disclaimer

This product is designed to aid navigation and should be used to augment normal navigational procedures and practices. It is the user’s responsibility to use this product prudently. Neither Quark-, nor their distributors or dealers accept responsibility or liability either to the products user or their estate for any accident, loss, injury or damage whatsoever arising out of the use or of liability to use this product.

Quark- products may be upgraded from time to time and future versions may therefore not correspond exactly with this manual. The manufacturer of this product disclaims any liability for consequences arising from omissions or inaccuracies in this manual and any other documentation provided with this product.

### Document history

Issue	Date	Changes / Comments
1.0	24-12-2020	Initial release
1.01	03-03-2021	Support Quark-cloud

## 12. Glossary

- **Ad-hoc WiFi, also known as ‘peer-to-peer’:** devices communicate directly with each other without a router.
- **IP:** internet protocol (ipv4, ipv6)- explains which version
- **IP Address:** is a numerical label assigned to each device connected to a computer network.
- **NMEA 0183:** is a serial data interface operating at 4.8 Kbit/second utilizing standard asynchronous communications. It is an electrical and data standard for communication between marine electronics.
- **NMEA2000 / N2K:** is a serial data network operating at 250 Kbit/second utilizing the Controller Area Network (CAN). The CAN bus was originally developed for the automotive industry but is now used in numerous industrial applications. It is a communications standard used for connecting marine sensors and display units within ships and boats and is generally plug-and-play.
- **NMEA2000 / N2K backbone:** Used with NMEA 2000, the backbone is the main BUS supplying data and power to all the devices on the boat.
- **PGN:** Packet group number – used in the NMEA 2000 protocol instead of sentences
- **Router:** A router is a networking device that forwards data packets between computer networks. Routers perform the traffic directing functions on the Internet.
- **Sentences:** Used in NMEA 0183 protocol to transfer data between marine equipment.
- **Station mode WiFi:** devices communicate by going through an Access Point (AP) or router. This allows the user to view data while accessing other router functions such as other devices or internet.
- **USB:** cable for communication and power supply between devices.



Quark-elec (UK)  
Unit 7, the Quadrant  
Newark Close  
Royston, UK  
SG8 5HL

